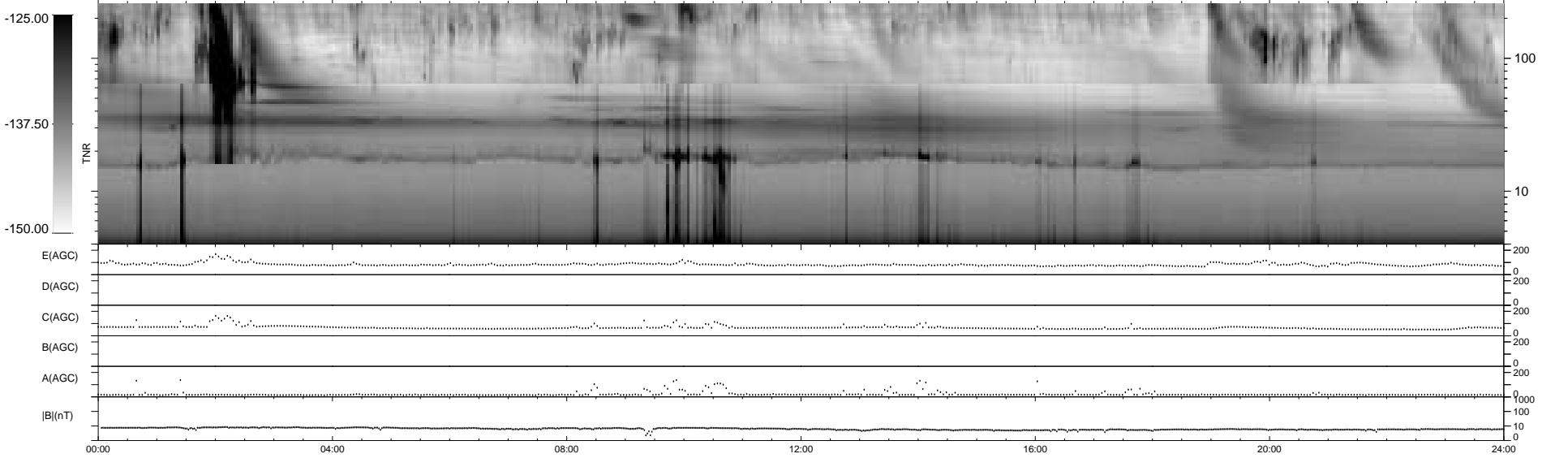
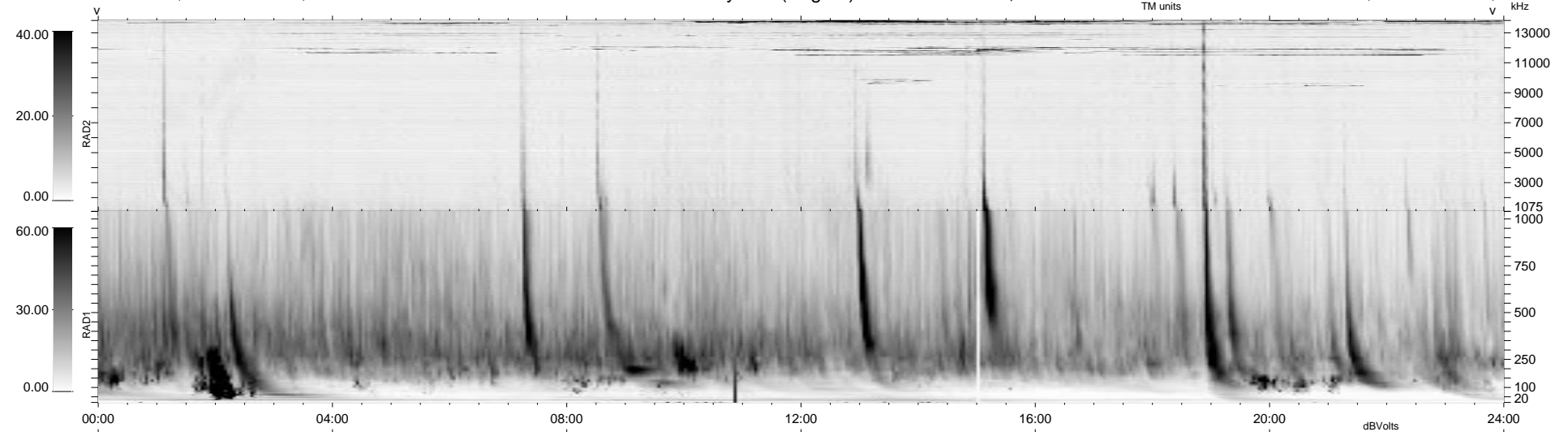


0 bad + 2 good MF/ZMF projected (100%) - 0 missing MFs
 Avg interval = 180 secs
 Re = 55.96 (43.31, 35.28, 3.19 GSE)

1.7d VMS-SunOS LZ version = v02
 DAILY Mon Sep 8, 2008
 Re = 66.07 (47.24, 46.04, 3.85 GSE)

WIND/WAVES Summary Plot (Page 1) for 13-AUG-2002, DOY = 225



E(AGC) 200
 D(AGC) 200
 C(AGC) 200
 B(AGC) 200
 A(AGC) 200
 |B|(nT) 1000
 100
 10
 0

00:00 04:00 08:00 12:00 16:00 20:00 24:00

RAD2
 Antenna Ey
 Mode LIN(1)
 SUM/SEP SEP
 Toggle OFF
 RAD1
 Antenna Ex
 Mode LIS(2,3)
 SUM/SEP SUM
 Toggle OFF
 TNR
 Antenna ExEy
 Mode A-32
 Sweep ACE