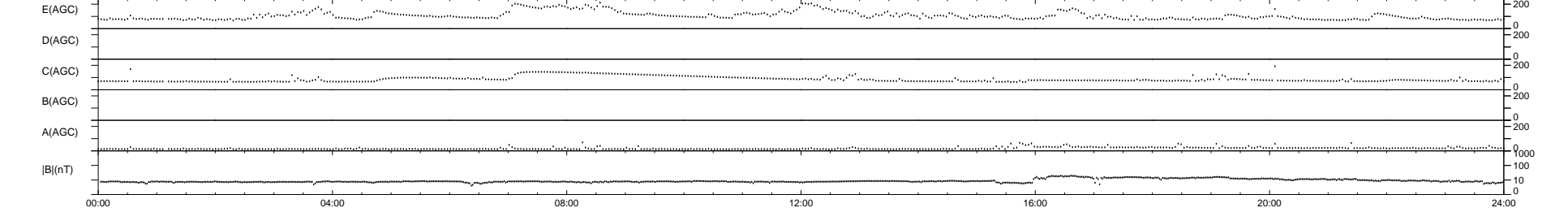
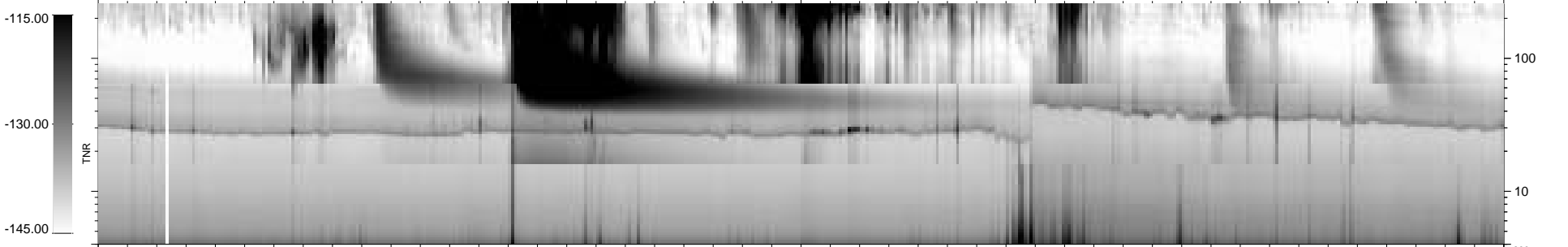
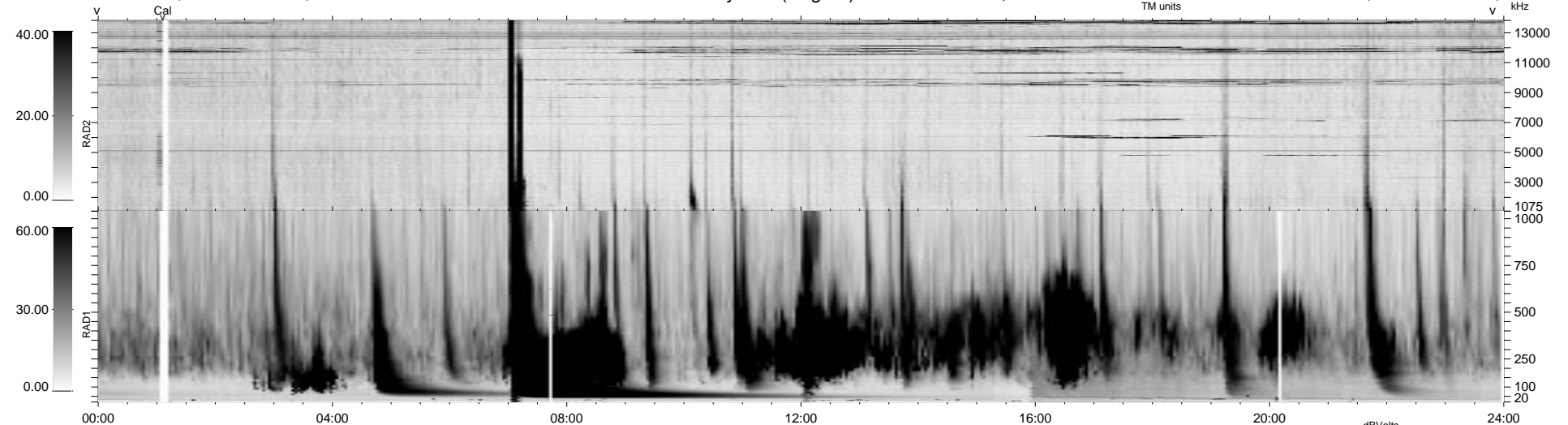


0 bad + 2 good MF/ZMF projected (100%) - 0 missing MFs
 Avg interval = 180 secs
 Re = 82.76 (-12.63, 81.65, 4.82 GSE)

1.7d VMS-SunOS LZ version = v01
 DAILY Mon Sep 8, 2008
 Re = 70.28 (-18.92, 67.60, 3.56 GSE)

WIND/WAVES Summary Plot (Page 1) for 17-JUL-2002, DOY = 198



RAD2
 Antenna Ey
 Mode LIN(1)
 SUM/SEP SEP
 Toggle OFF
 RAD1
 Antenna Ex
 Mode LIS(2,3)
 SUM/SEP SUM
 Toggle OFF
 TNR
 Antenna ExEy
 Mode A-32
 Sweep ACE