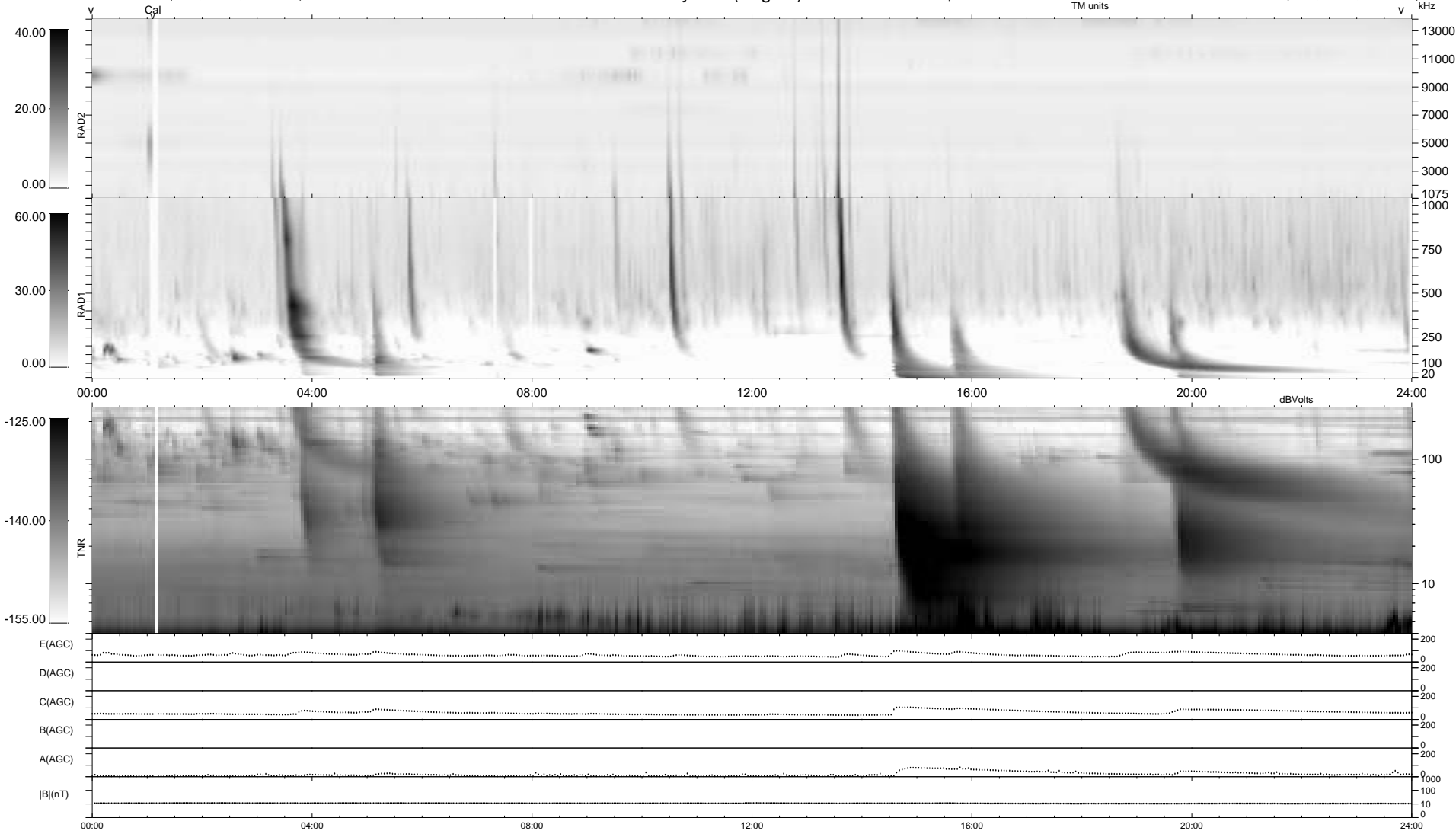


0 bad + 2 good MF/ZMF projected (100%) - 0 missing MFs
 Avg interval = 180 secs
 Re = -322.23 (17.91, 320.91, 22.95 GSE)

1.7d VMS-SunOS LZ version = v01
 DAILY Mon Sep 8, 2008
 Re = 322.44 (19.41, 321.03, 23.08 GSE)

WIND/WAVES Summary Plot (Page 1) for 24-MAY-2002, DOY = 144



RAD2
 Antenna Ey
 Mode LIN(16)
 SUM/SEP SEP
 Toggle OFF

RAD1
 Antenna Ex
 Mode LIS(2,3)
 SUM/SEP SUM
 Toggle OFF

TNR
 Antenna ExEy
 Mode A-32
 Sweep ACE