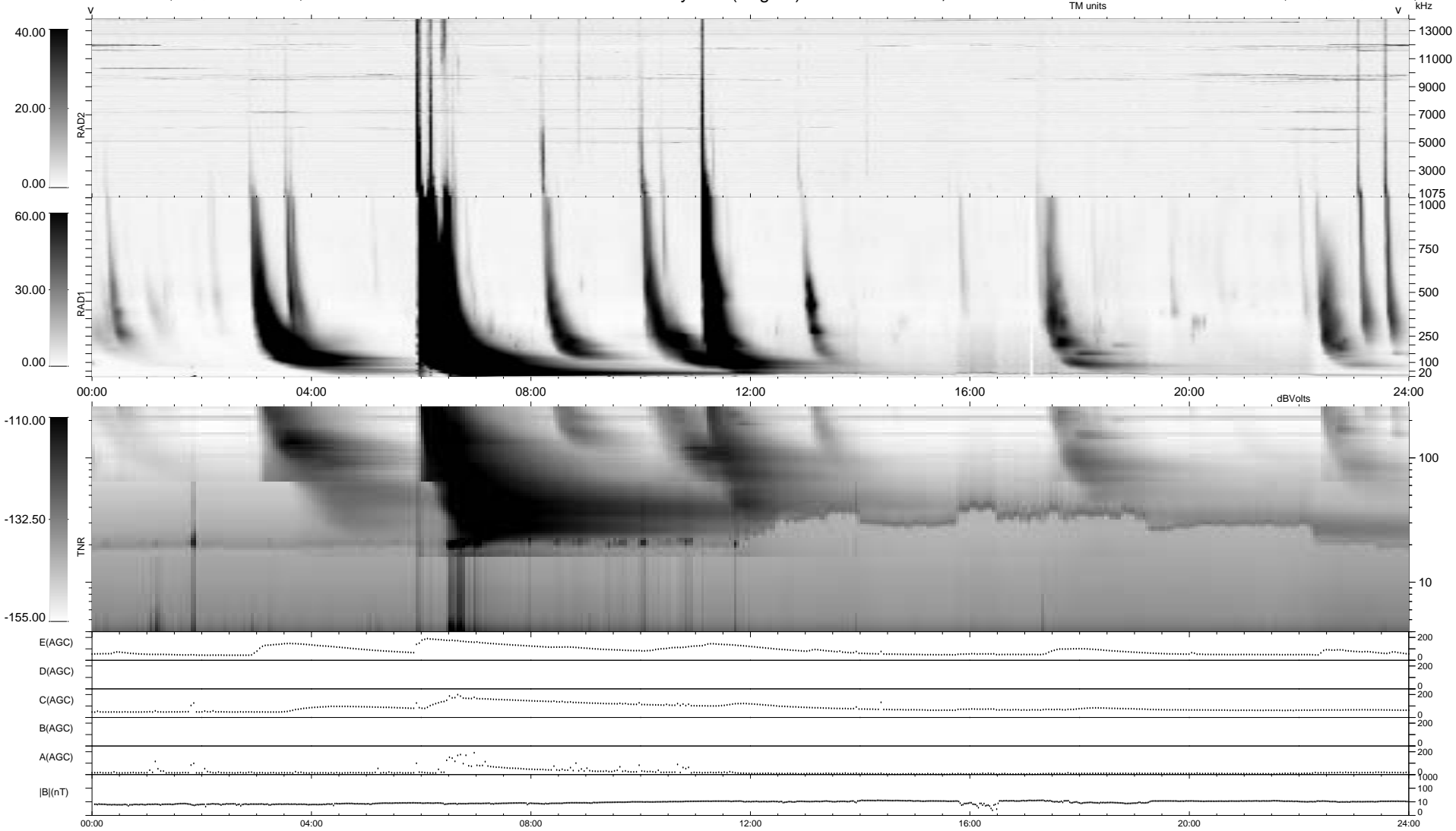


0 bad + 2 good MF/ZMF projected (100%) - 0 missing MFs
 Avg interval = 180 secs
 Re = -281.13 (-10.02, -280.79, 9.50 GSE)

1.7d VMS-SunOS LZ version = v02
 DAILY Mon Sep 8, 2008
 Re = 277.45 (-10.38, -277.11, 9.09 GSE)

WIND/WAVES Summary Plot (Page 1) for 20-FEB-2002, DOY = 51



RAD2
 Antenna Ey
 Mode LIN(1)
 SUM/SEP SEP
 Toggle OFF
 RAD1
 Antenna Ex
 Mode LIS(2,3)
 SUM/SEP SUM
 Toggle OFF
 TNR
 Antenna ExEy
 Mode A-32
 Sweep ACE