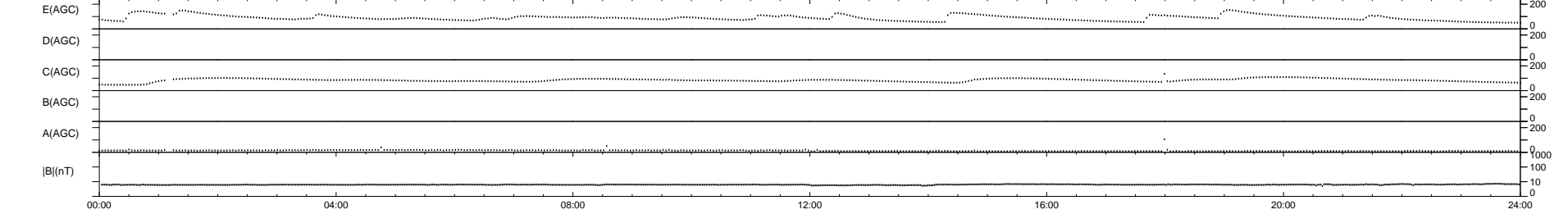
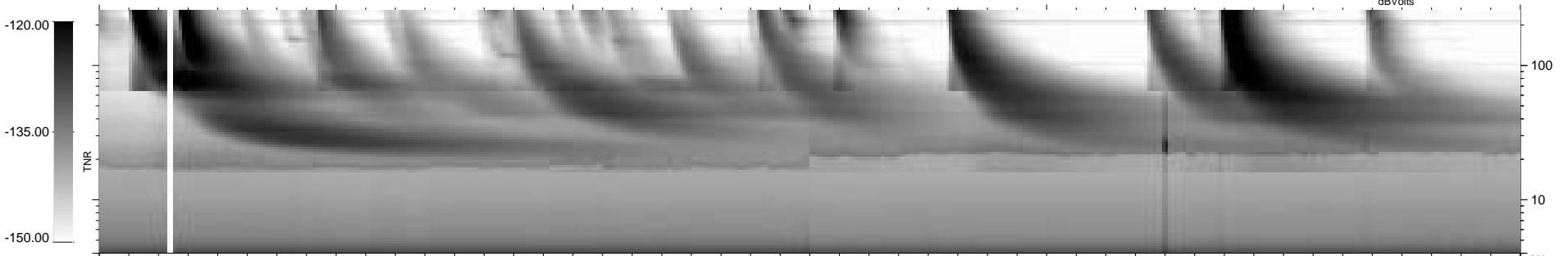
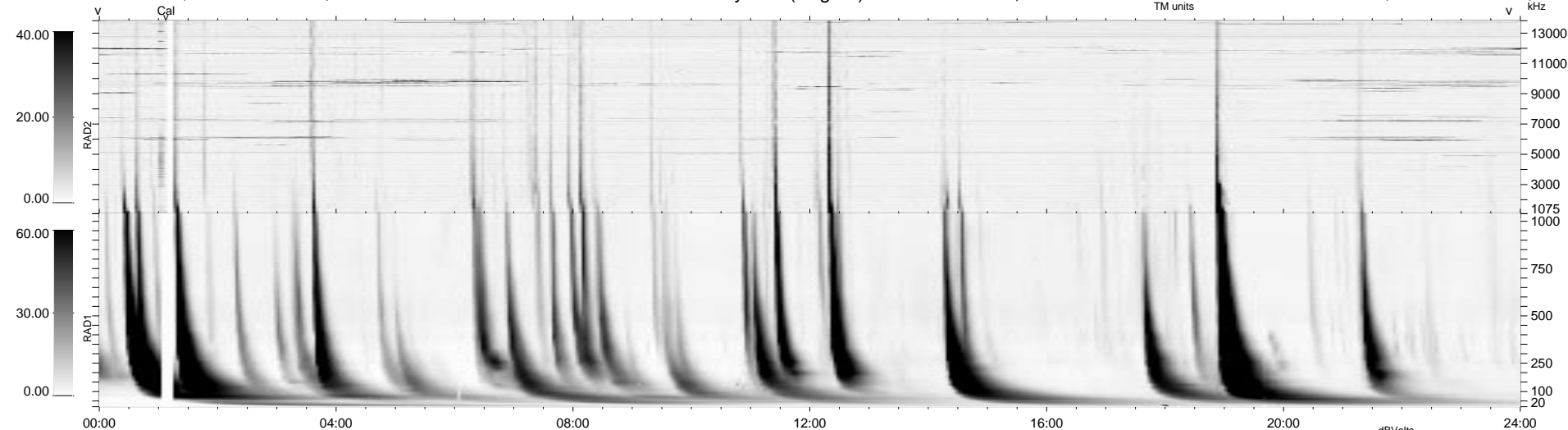


0 bad + 2 good MF/ZMF projected (100%) - 0 missing MFs  
 Avg interval = 180 secs  
 Re = 323.59 (14.29, -322.84, 16.63 GSE)

1.7d VMS-SunOS LZ version = v01  
 DAILY Mon Sep 8, 2008  
 Re = 323.37 (12.64, -322.70, 16.41 GSE)

### WIND/WAVES Summary Plot (Page 1) for 30-JAN-2002, DOY = 30



```

RAD2
Antenna Ey .....
Mode LIN(1) .....
SUM/SEP SEP .....
Toggle OFF .....

RAD1
Antenna Ex .....
Mode LIS(2,3) .....
SUM/SEP SUM .....
Toggle OFF .....

TNR
Antenna ExEy .....
Mode A-32 .....
Sweep ACE .....
  
```