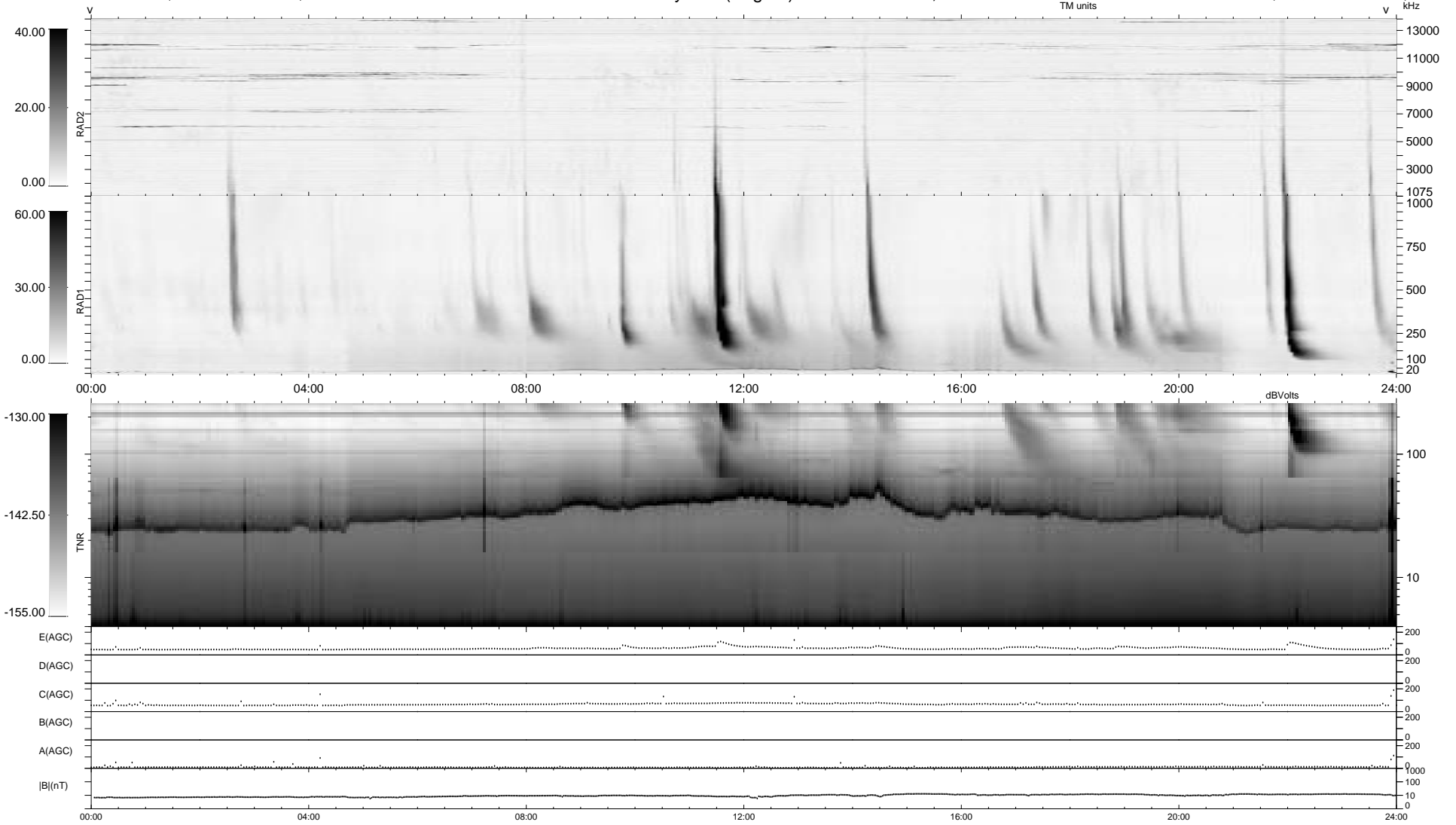


0 bad + 2 good MF/ZMF projected (100%) - 0 missing MFs
 Avg interval = 180 secs
 Re = 322.34 (23.24, -321.02, 17.59 GSE)

1.7d VMS-SunOS LZ version = v01
 DAILY Mon Sep 8, 2008
 Re = 322.88 (21.40, -321.70, 17.42 GSE)

WIND/WAVES Summary Plot (Page 1) for 25-JAN-2002, DOY = 25



RAD2
 Antenna Ey
 Mode LIN(1)
 SUM/SEP SEP
 Toggle OFF
 RAD1
 Antenna Ex
 Mode LIS(2,3)
 SUM/SEP SUM
 Toggle OFF
 TNR
 Antenna ExEy
 Mode A-32
 Sweep ACE