

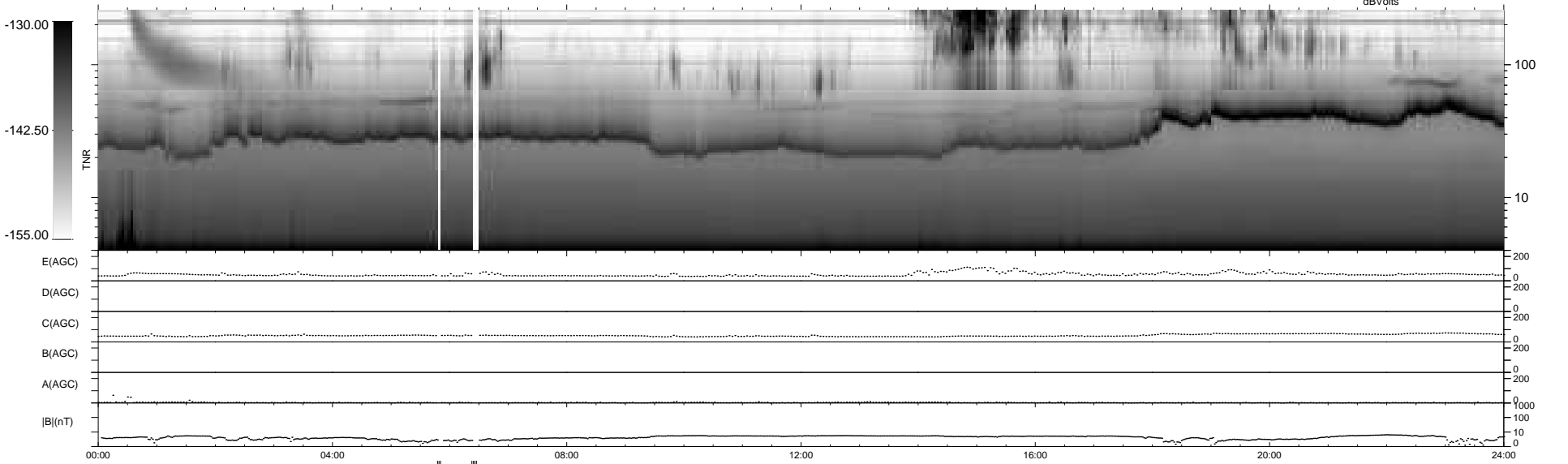
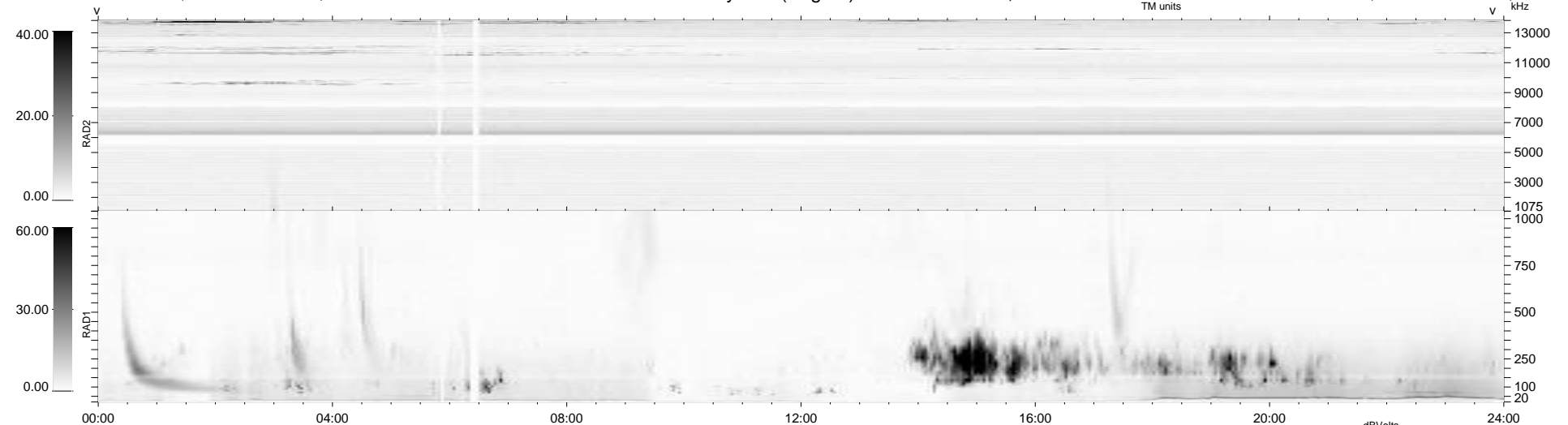
15 bad + 917 good MF/939MF projected (97%) - 7 missing MFs
 Avg interval = 180 secs
 Re = 208.46 (199.36, -60.36, -8.14 GSE)

windlib 2.0b

LZ version = v01

WIND/WAVES Summary Plot (Page 1) for 14-OCT-2021, DOY = 287

DAILY 2021-10-15 12:20:05
 Re = 207.10 (198.83, -57.33, -8.43 GSE)



RAD2
 Antenna Ey
 Mode LIN(1)
 SUM/SEP SEP
 Toggle OFF

RAD1
 Antenna Ex
 Mode LIS(2,4)
 SUM/SEP SUM
 Toggle OFF

TNR
 Antenna ExEy
 Mode A-32
 Sweep ACE