

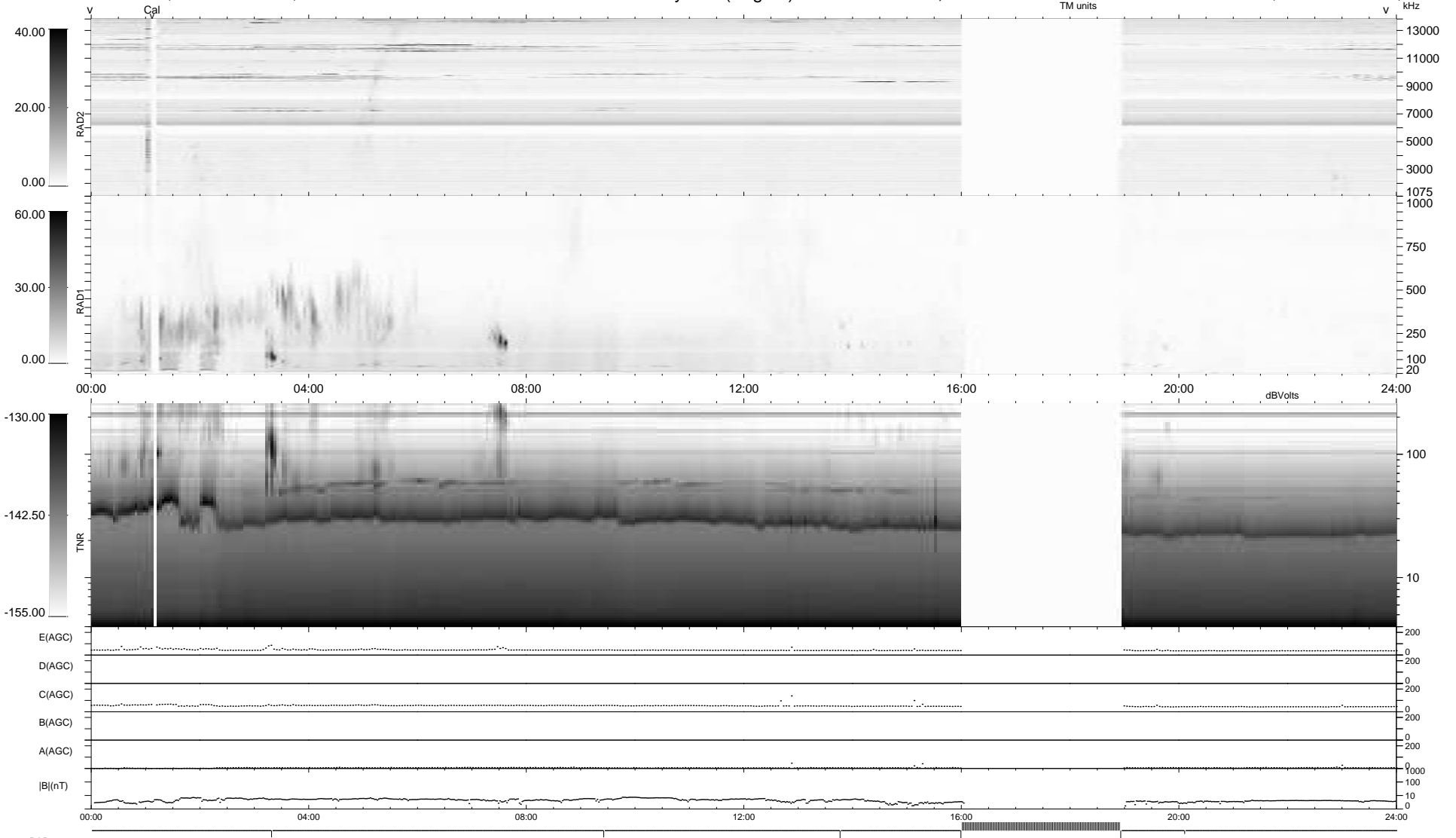
6 bad + 819 good MF/939MF projected (87%) - 114 missing MFs
 Avg interval = 180 secs
 Re = 252.12 (232.61, -96.88, 8.41 GSE)

windlib 2.0b

LZ version = v01

WIND/WAVES Summary Plot (Page 1) for 31-MAR-2019, DOY = 90

DAILY 2019-04-01 16:20:21
 Re = 251.52 (231.55, -97.88, 8.27 GSE)



```

RAD2
Antenna Ey .....
Mode LIN(1) .....
SUM/SEP SEP .....
Toggle OFF .....

RAD1
Antenna Ex .....
Mode LIS(2,4) .....
SUM/SEP SUM .....
Toggle OFF .....

TNR
Antenna ExEy .....
Mode A-32 .....
Sweep ACE .....
  
```