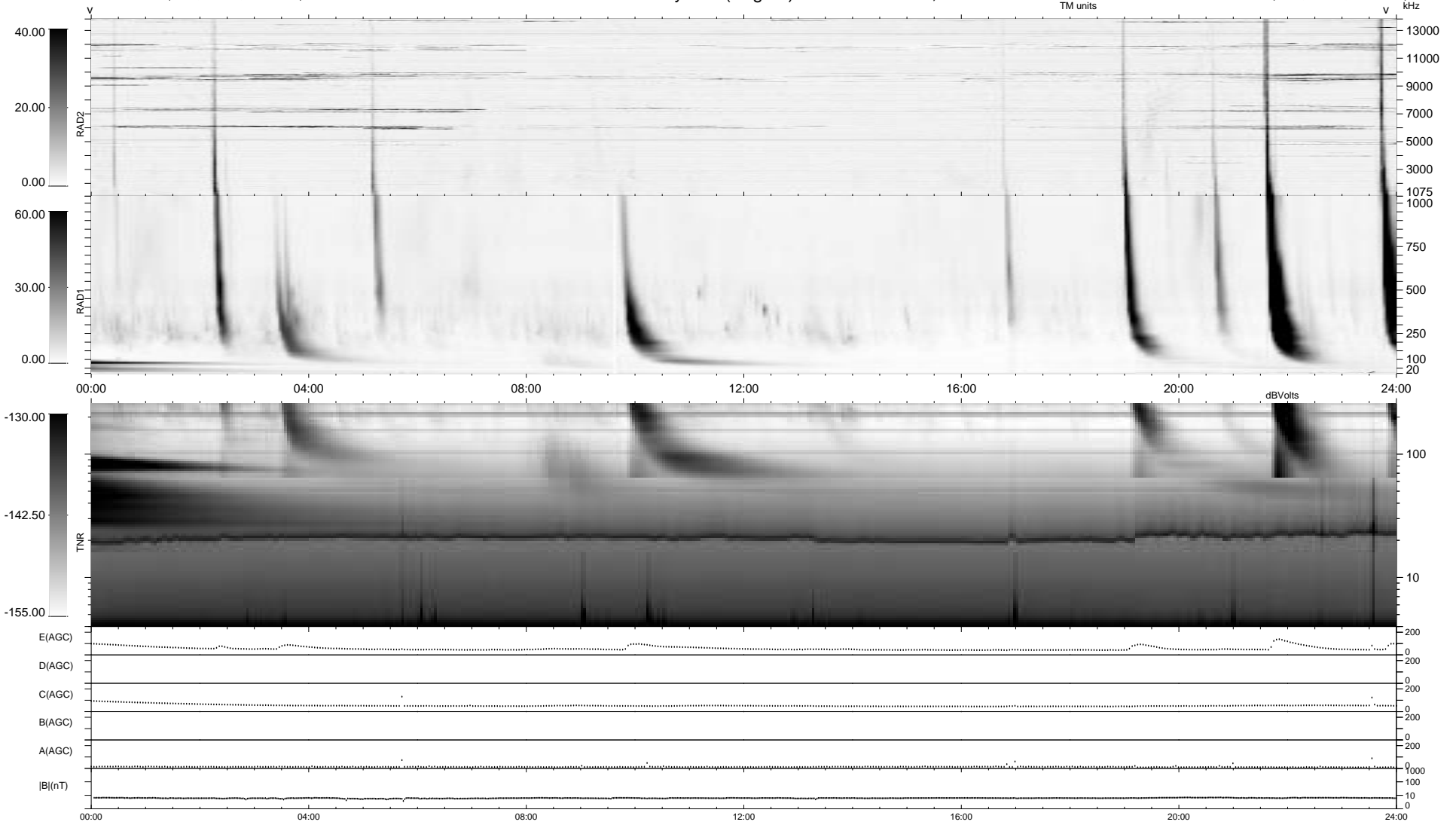


0 bad + 2 good MF/ZMF projected (100%) - 0 missing MFs  
 Avg interval = 180 secs  
 Re = 272.25 (49.77, -267.03, 18.44 GSE)

1.7d VMS-SunOS LZ version = v01  
 DAILY Mon Sep 8, 2008  
 Re = 276.46 (49.63, -271.33, 18.56 GSE)

WIND/WAVES Summary Plot (Page 1) for 03-JAN-2002, DOY = 3



```

RAD2
Antenna Ey .....
Mode LIN(1) .....
SUM/SEP SEP .....
Toggle OFF .....

RAD1
Antenna Ex .....
Mode LIS(2,3) .....
SUM/SEP SUM .....
Toggle OFF .....

TNR
Antenna ExEy .....
Mode A-32 .....
Sweep ACE .....
  
```