

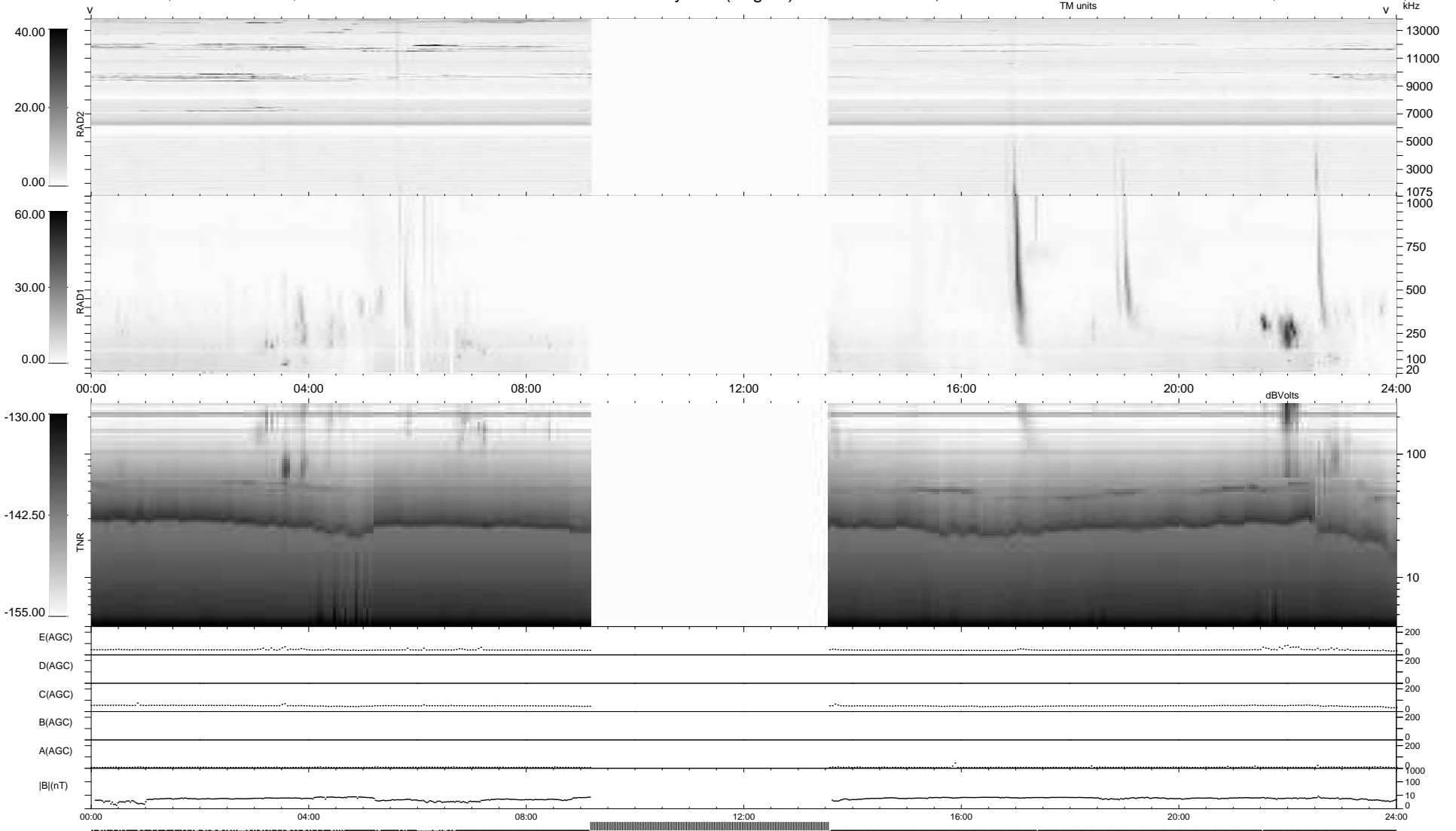
102 bad + 665 good MF/939MF projected (70%) - 172 missing MFs
Avg interval = 180 secs
Re = 250.12 (229.35, -99.49, 7.96 GSE)

windlib 2.0b

LZ version = v01

WIND/WAVES Summary Plot (Page 1) for 03-APR-2019, DOY = 93

DAILY 2019-04-05 00:20:20
Re = 249.33 (228.23, -100.08, 7.80 GSE)



RAD2
Antenna Ey
Mode LIN(1)
SUM/SEP SEP
Toggle OFF

RAD1
Antenna Ex
Mode LIS(2/4)
SUM/SEP SUM
Toggle OFF

TNR
Antenna ExEy
Mode A-32
Sweep ACE