

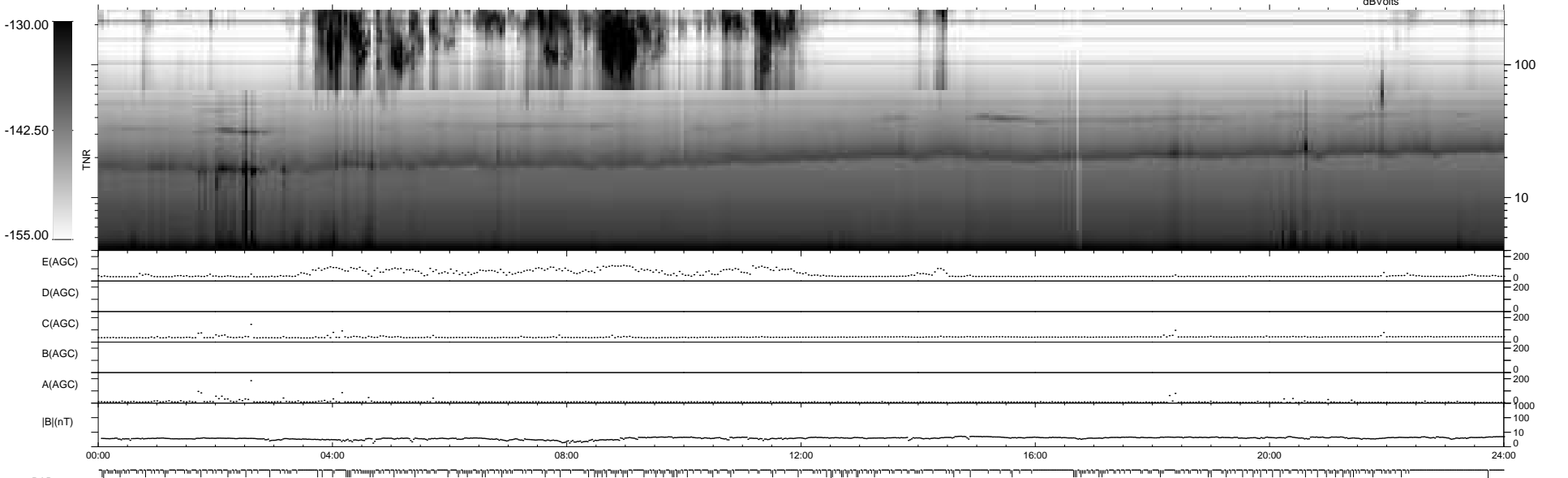
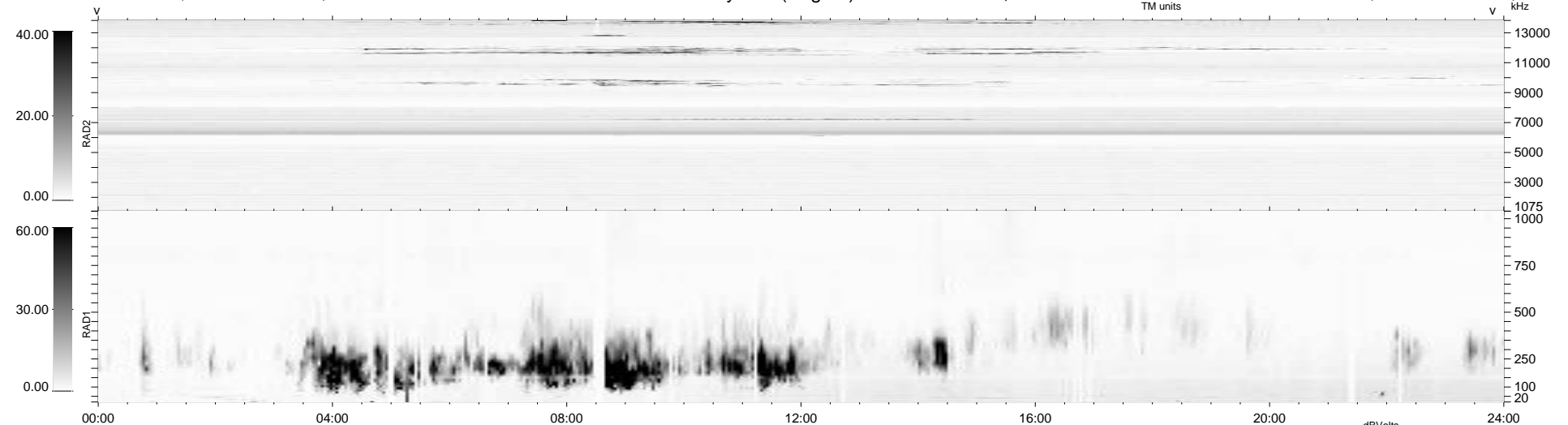
344 bad + 595 good MF/939MF projected (63%) - 0 missing MFs
 Avg interval = 180 secs
 Re = 236.91 (214.68, 100.06, -5.29 GSE)

windlib 2.0b

LZ version = v01

WIND/WAVES Summary Plot (Page 1) for 07-JAN-2019, DOY = 7

DAILY 2019-01-15 17:20:40
 Re = 238.09 (215.78, 100.49, -5.07 GSE)



RAD2
 Antenna Ey
 Mode LIN(1)
 SUM/SEP SEP
 Toggle OFF

RAD1
 Antenna Ex
 Mode LIS(2,4)
 SUM/SEP SUM
 Toggle OFF

TNR
 Antenna ExEy
 Mode A-32
 Sweep ACE