

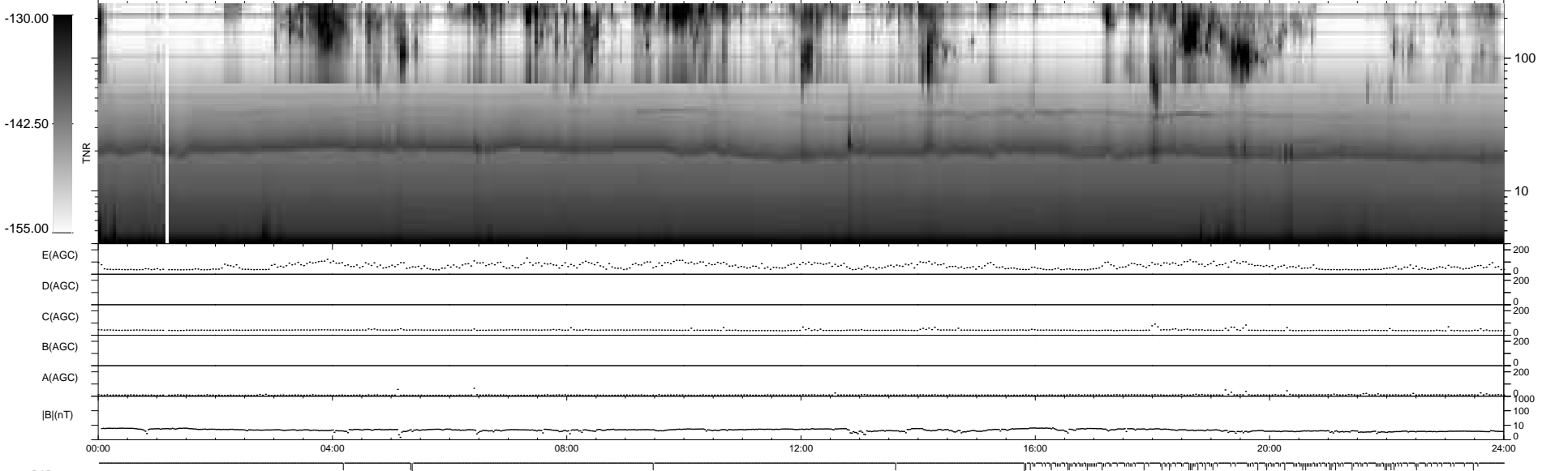
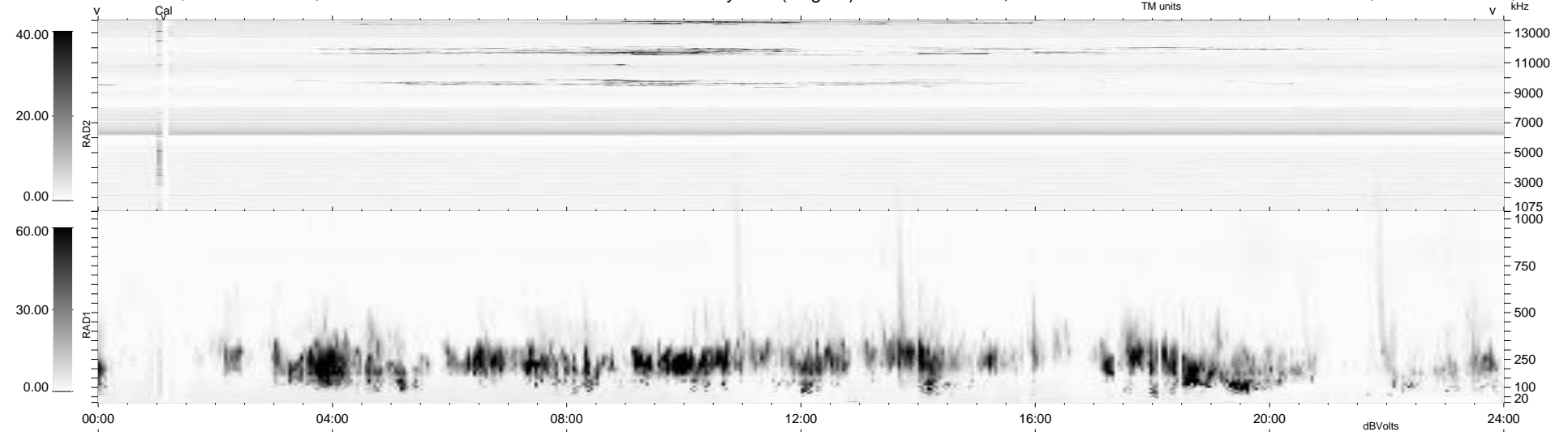
146 bad + 793 good MF/939MF projected (84%) - 0 missing MFs
 Avg interval = 180 secs
 Re = 235.67 (213.57, 99.48, -5.50 GSE)

windlib 2.0b

LZ version = v01

WIND/WAVES Summary Plot (Page 1) for 06-JAN-2019, DOY = 6

DAILY 2019-01-15 17:20:04
 Re = 236.90 (214.67, 100.05, -5.29 GSE)



RAD2
 Antenna Ey
 Mode LIN(1)
 SUM/SEP SEP
 Toggle OFF
 RAD1
 Antenna Ex
 Mode LIS(2,4)
 SUM/SEP SUM
 Toggle OFF
 TNR
 Antenna ExEy
 Mode A-32
 Sweep ACE